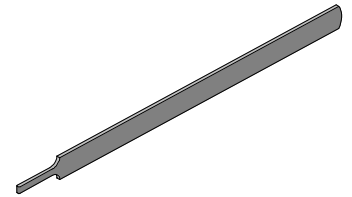




Extractor Tool Instruction Sheet Order No. 11-03-0003 Engineering No. (HT1884)



FEATURES

- This tool is designed to extract different terminal series from various plug and receptacle housings. See Chart below.

SCOPE

Products: KK ® 3.96mm (.156 in) pitch Crimp Terminals

| Terminal Series No | Description | Housings Series No | Terminal Order No. | | | |
|--------------------|--|------------------------------|--------------------|------------|------------|------------|
| 1797 | KK ® 3.96mm (.156 in) pitch Bifurcated Terminals | 1796 | 08-01-0101 | 08-01-0102 | 08-01-0105 | 08-01-0106 |
| | | | 08-01-0121 | 08-01-0122 | 08-01-0123 | 08-01-0124 |
| | | | 08-03-0101 | 08-03-0102 | 08-05-0103 | 08-05-0104 |
| | | | 08-05-0105 | 08-06-0101 | 08-06-0102 | 08-06-0105 |
| | | | 08-06-0106 | 08-07-0101 | 08-07-0102 | |
| 1799 | KK ® 3.96mm (.156 in) pitch Right Angle Terminal | 2139, 41696, 52213 and 52266 | 08-30-0109 | 08-30-0110 | 08-34-0105 | 08-34-0106 |
| | | | 08-34-0109 | 08-35-0105 | 08-35-0106 | |
| 4366 | KK ® 3.96mm (.156 in) pitch Straight-On Dualcon TM Terminals | 4338 | 08-03-0303 | 08-03-0304 | 08-05-0301 | 08-05-0302 |
| | | | 08-05-0305 | 40-01-1194 | 50-36-1873 | |
| 4573 | KK ® 3.96mm (.156 in) pitch Cantilever Straight-On Terminals | 4338 | 08-03-0305 | 08-03-0306 | 08-05-0303 | 08-05-0304 |
| | | | 50-36-2431 | 50-36-2432 | | |

OPERATION:

- Push the terminal forward in the arrow direction before using the Extractor Tool as shown in Figure 1. Insert the Extractor Tool into the slot on the bottom or top of the connector housing.

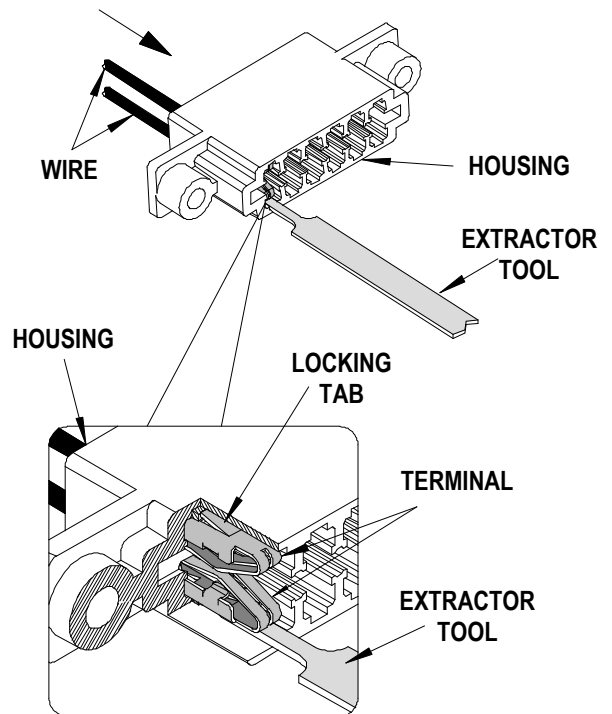


Figure 1

- Depress the terminal locking tabs, push the terminal back through the Connector slot and pull the terminated wire out in the arrow direction as shown in Figure 2.

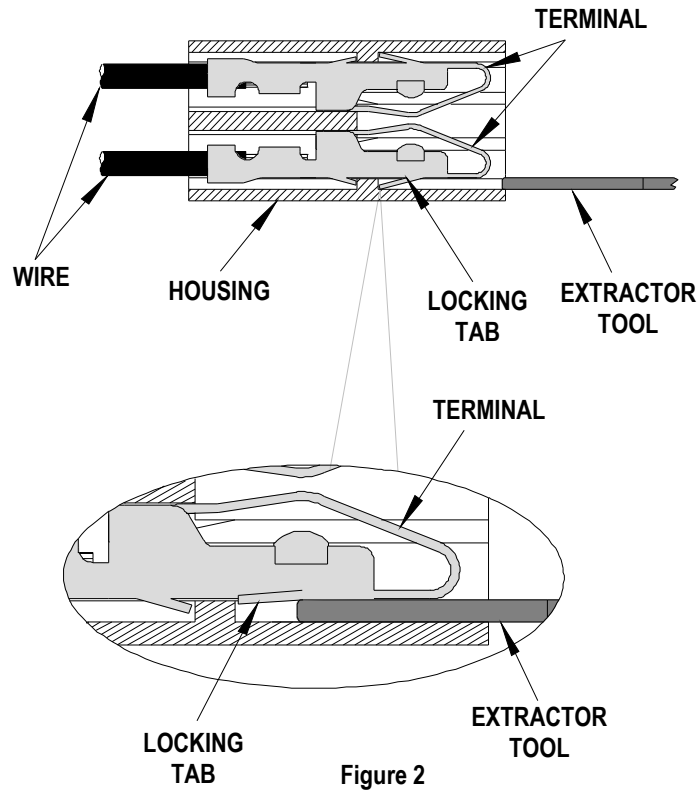


Figure 2

CAUTION: Molex specifications are valid only when used with Molex terminals, applicators and tooling.

Molex does not offer repair parts for Extraction Tools due to the inexpensive nature of the tool.

Contact Information

For more information on Molex application tooling please contact your nearest Molex location shown below.

Americas Headquarters
 Lisle, Illinois 60532 U.S.A.
 1-800-78MOLEX
 amerinfo@molex.com

Far East North Headquarters
 Yamato, Kanagawa, Japan
 81-462-65-2324
 feninfo@molex.com

Far East South Headquarters
 Jurong, Singapore
 65-6-268-6868
 fesinfo@molex.com

European Headquarters
 Munich, Germany
 49-89-413092-0
 eurinfo@molex.com

Corporate Headquarters
 2222 Wellington Ct.
 Lisle, IL 60532 U.S.A.
 630-969-4550
 Fax: 630-969-1352

Visit our Web site at <http://www.molex.com>